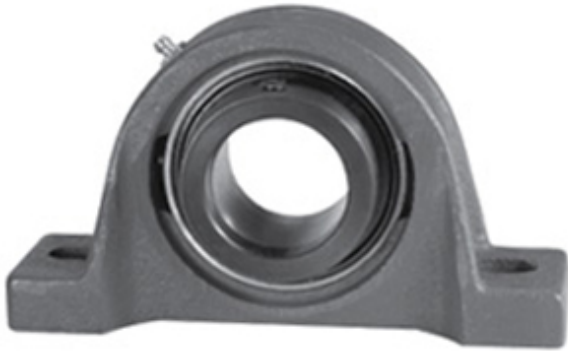




Bearing Brasil Ltda.

1.375 Inch | 34.925 Millimeter x 2.016 Inch | 51.2
Millimeter x 1.875 Inch | 47.63 Millimeter LINK
BELT P3Y222E3 Pillow Block Bearings



P3Y222E3 Bearing 2D drawings and 3D CAD models

Bearing No. P3Y222E3

Category	Pillow Block Bearings
Inventory	0.0
Manufacturer Name	REXNORD
Minimum Buy Quantity	N/A
Weight	1.606
EAN	0662327451288
Product Group	M06110
Number of Mounting Holes	2
Mounting Method	Eccentric Collar
Housing Style	2 Bolt Pillow Block
Rolling Element	Ball Bearing
Housing Material	Cast Iron
Expansion / Non-expansion	Non-expansion
Mounting Bolts	1/2 Inch
Relubricatable	Yes
Insert Part Number	YG222E3L
Seals	Triple Lip Contact
Housing Configuration	1 Piece Solid
Inch - Metric	Inch
Other Features	Single Row Standard Duty Standard Backing Wide Inner Race
Long Description	2 Bolt Pillow Block; 1-3/8" Bore; 1-7/8" Base to Center Height; Eccentric Collar Mount; Ball Bearing;



Bearing Brasil Ltda.

	Relubricatable; Cast Iron; Triple Lip Contact; Non- expansion
Category	Pillow Block
UNSPSC	31171511
Harmonized Tariff Code	8483.20.40.40
Noun	Bearing
Keyword String	Pillow Block
Manufacturer URL	http://www.rexnord.com
Manufacturer Item Number	P3Y222E3
Manufacturer Internal Number	5845128
Weight / LBS	4
Actual Bolt Center to Center	4.9 Inch 125.4Millimeter
Nominal Bolt Center to Center	5 Inch 127 Millimeter
Bolt Spacing Maximum	0 Inch 0Millimeter
Bolt Spacing Minimum	0 Inch 0Millimeter
D	2.016 Inch 51.2 Millimeter
B	1.875 Inch 47.63 Millimeter
d	1.375 Inch 34.925 Millimeter